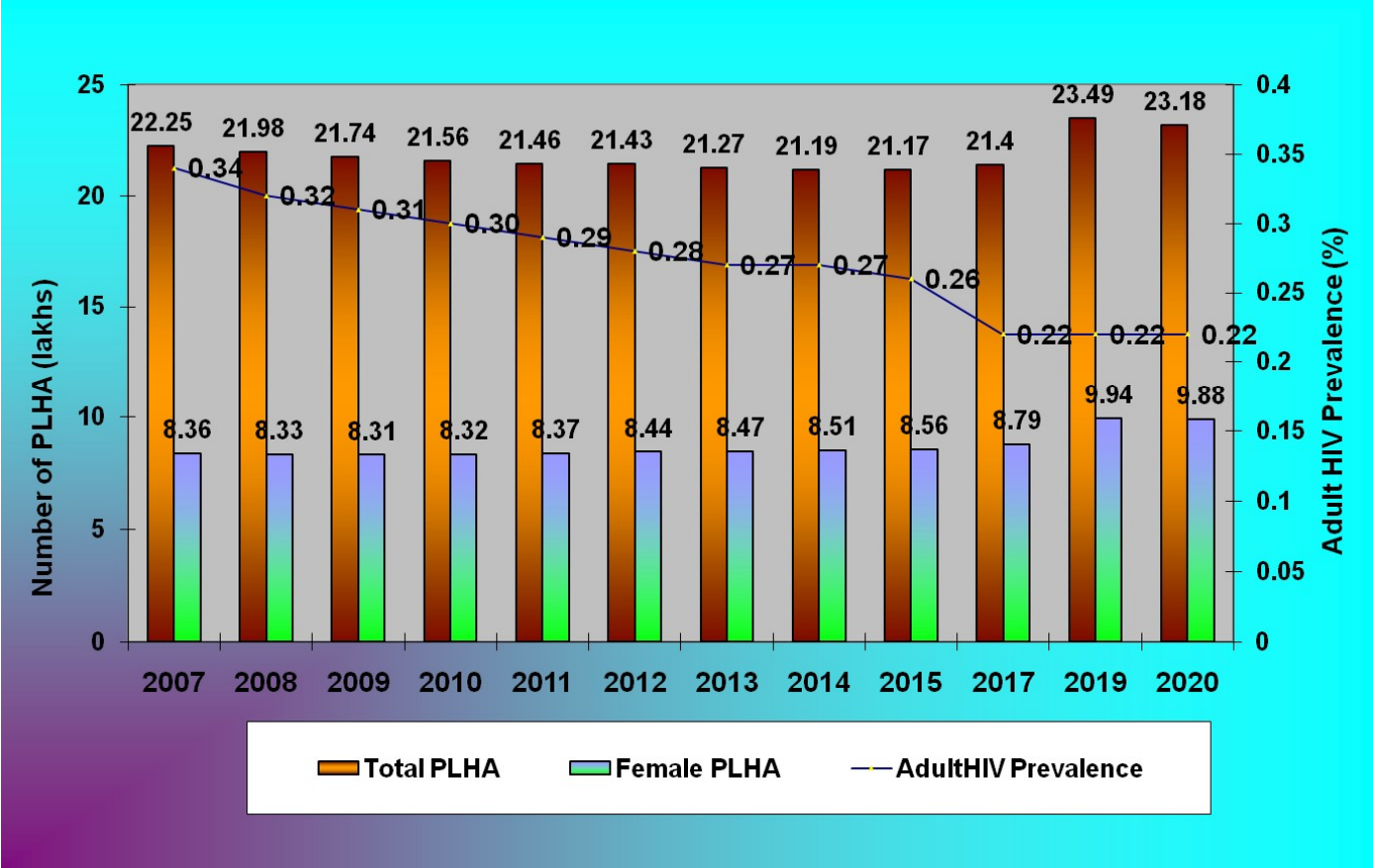


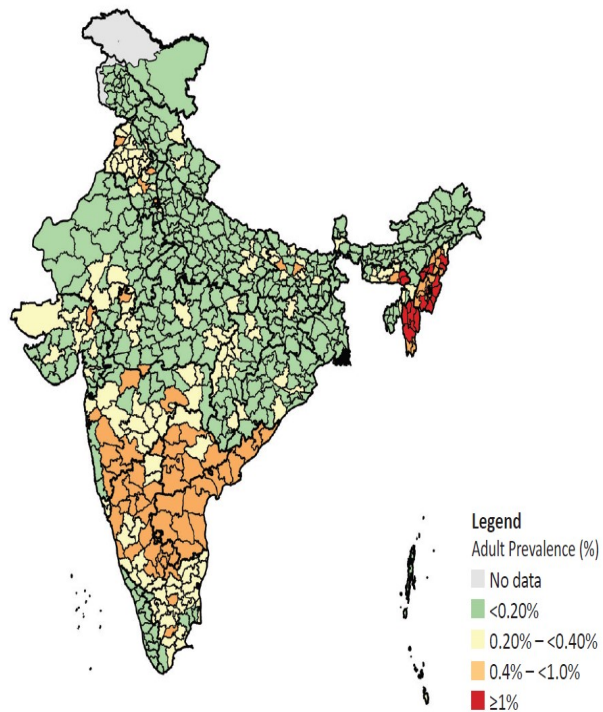
# Estimation of HIV infection in India, 2007-2021



**Table 7. Overview of HIV/AIDS Epidemic in 2020**

Indicator	Disaggregation	Value
Adult (15-19 yrs.) Prevalence (In %)	<b>Total</b>	0.22 [0.17-0.29]
	Male	0.23 [0.18-0.31]
	Female	0.20 [0.15-0.26]
Number of people living with HIV (In lakh)	<b>Total</b>	23.18 [18.33-29.78]
	Adults (15+ years)	22.37 [17.74-28.69]
	Women (15+ years)	9.88 [7.82-12.68]
	Children (<15 years)	0.81 [0.59-1.09]
HIV incidence per 1000 uninfected population	<b>Total</b>	0.04 [0.02-0.09]
	Male	0.05 [0.02-0.09]
	Female	0.04 [0.02-0.08]
New HIV Infections (In lakh)	<b>Total</b>	0.58 [0.29- 1.14]
	Adults (15+ years)	0.52 [0.25-1.04]
	Women (15+ years)	0.22 [0.11-0.45]
Change in new HIV infections since 2010 (In %)	<b>Total</b>	-47.89
	Adults (15+ years)	-46.96
	Female (15+ years)	-45.72
	Children (<15 years)	-55.02
AIDS-related mortalities (In lakh)	<b>Total</b>	0.32 [0.20-0.52]
	Adults (15+ years)	0.28 [0.18-0.46]
	Women (15+ years)	0.07 [0.04-0.13]
Change in AIDS-related mortalities since 2010 (In %)	<b>Total</b>	-82.24
	Adults (15+ years)	-83.19
	Female (15+ years)	-89.17
	Children (<15 years)	-68.09

# District-wise Scenario of HIV/AIDS



District Priority	Description
High	Adult prevalence of $\geq 1\%$ or PLHIV size of $\geq 5,000$
Moderate	Adult prevalence of $0.4\% \leq 1\%$ or PLHIV size of $2,500 \leq 5,000$
Low	Adult prevalence of $0.20\% \leq 0.40\%$ or PLHIV size of $1,000 \leq 2,500$
Very Low	Adult prevalence of $< 0.20\%$ or PLHIV size of $< 1,000$

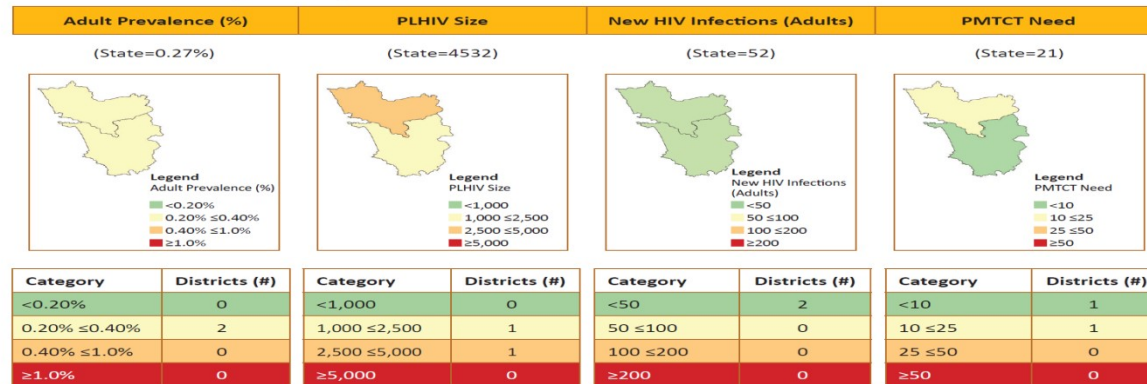
<b>Status of the HIV/AIDS Epidemic in 2020 for State of Goa</b>		
<b>Adult (15-49 years) HIV Prevalence (%)</b>	Total	0.25(0.18-0.38)
<b>Number of People Living with HIV (in thousand)</b>	Total	4.36 (3.51-6.01)
<b>HIV incidence per 1,000 uninfected population</b>	Total	0.02(0.01-0.08)
<b>New HIV infections (thousand)</b>	Total	0.04 (0.01-0.14)
<b>Decline in New HIV infections since 2010 (%)</b>	Total	49.00%
<b>AIDS- related deaths (thousand)</b>	Total	0.11 (0.07-0.18)
<b>Decline in AIDS- related death since 2010 (%)</b>	Total	81.77%
<b>PMTCT needs (thousand)</b>	Total	0.02(0.02-0.04)

## Status on three 95s for the year 2021-22

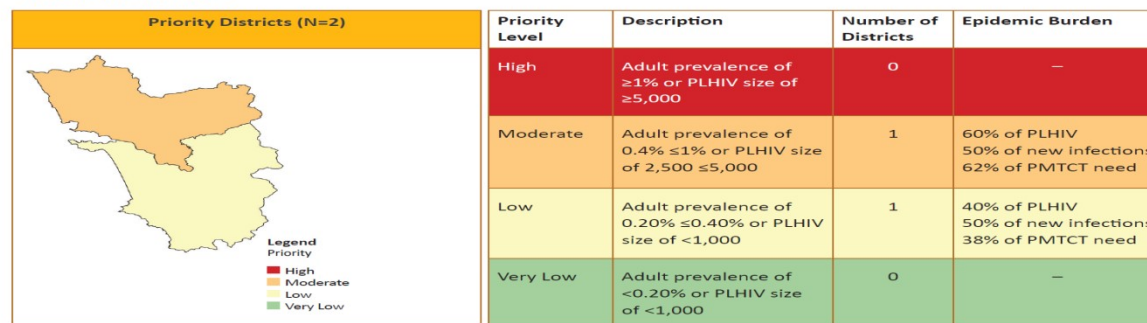
<b>1<sup>st</sup> 95 % - of all people living with HIV know their status</b>	<b>81%</b>
<b>2<sup>nd</sup> 95% - of all people with diagnosed infection receive sustained Antiretroviral Therapy</b>	<b>84%</b>
<b>3<sup>rd</sup> 95% - of all receiving Antiretroviral Therapy are virally suppressed</b>	<b>89%</b>

# District wise Key Epidemiological Estimates

District-wide Map on Key Indicators



Priority Districts



## Goan Scenario

- **First case of HIV+ detected in 1987.**
  - **1987- First Case detected in a Foreigner.**
  - **1988- An Indian but a non Goan**
  - **1989- First Case detected in a Goan Student.**
- **Total number of HIV+ cases detected in Goa since 1987 till June 2022 is 17907**
- **Total AIDS cases reported to Goa SACS up to June 2022 is 1,867.**
- **AIDS related deaths reported to Goa SACS up to May 2022 is 1260.**
- **HIV infection is prevalent in all parts of Goa and majority of the cases are reported in the four coastal talukas viz. Mormugao (17.0%) and Salcete (13.4%), in South Goa District and Bardez (19.2%) and Tiswadi (12.1%) in North Goa District during 2021. Out of 223 cases reported in Goa during the year 2021, 15.2% belong to other States /foreigners/not specified.**

## Goan Scenario

**65.4% of the cases detected in Goa during 2021 belonged to the age group 15-49 years.**

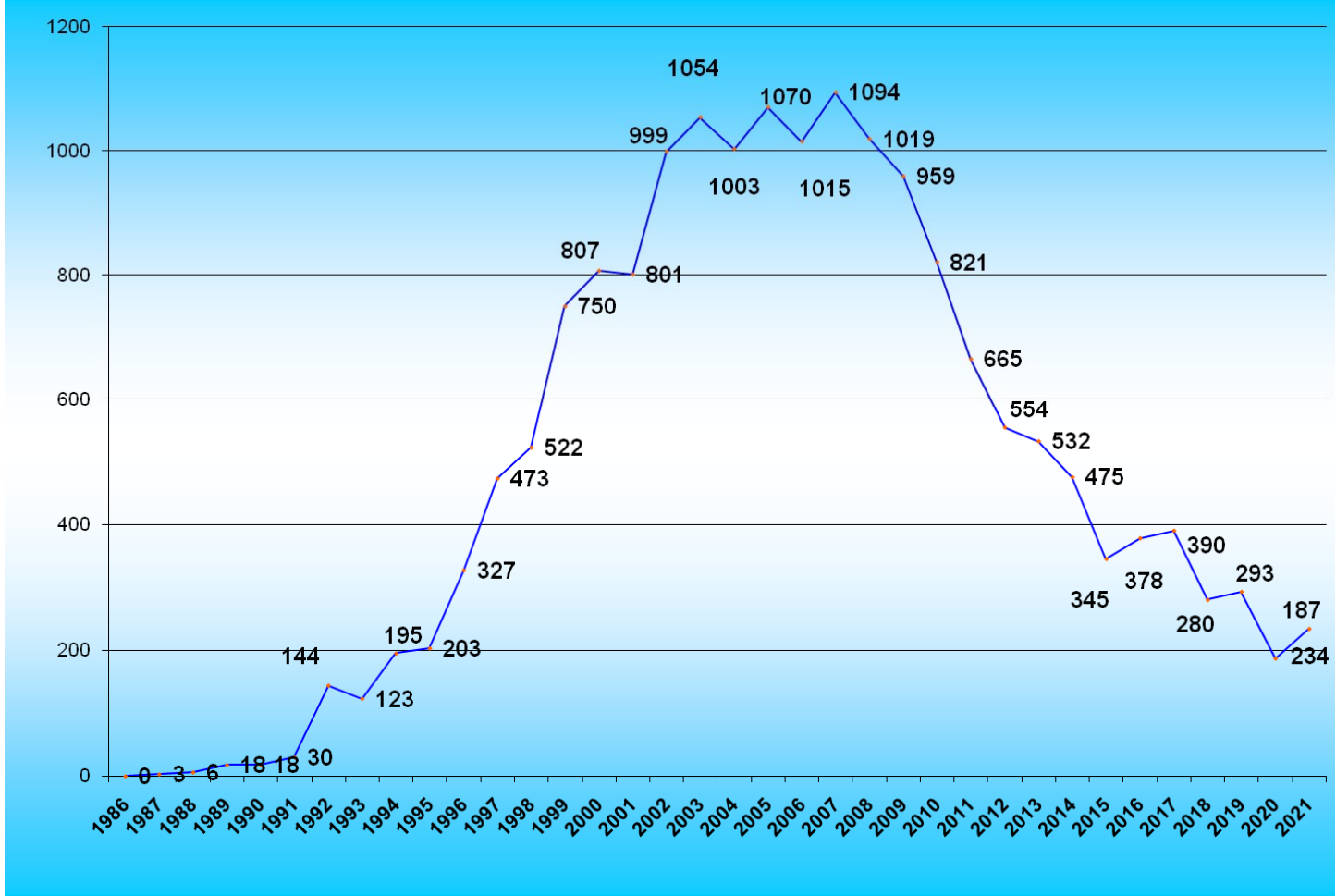
**During 2021, out of the total female infected cases nearly 19.2% belong to the age group 15-34 years whereas around 32% of the infected males belonged to this age group, out of the total male infected.**

**In the age group 35-49, over 38 % males and about 52.1% females were found infected out of the total male and female cases detected during 2021.**

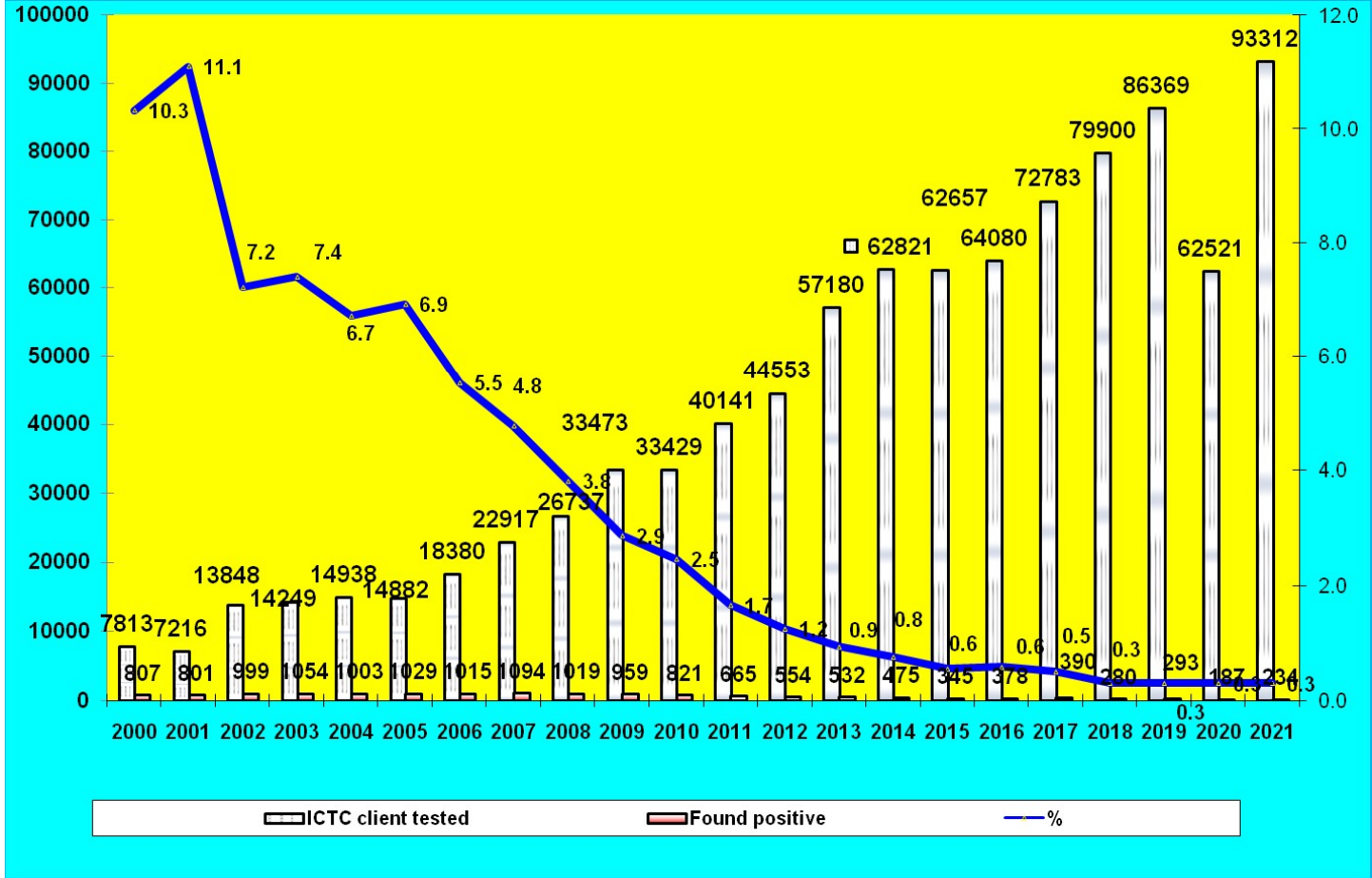
**During 1999-2021, Sexual route is the predominant mode of transmission in the range of 83 to 96% followed by Perinatal 4 to 8%. Transmission through blood and blood products and infected syringes and needles is negligible in Goa.**



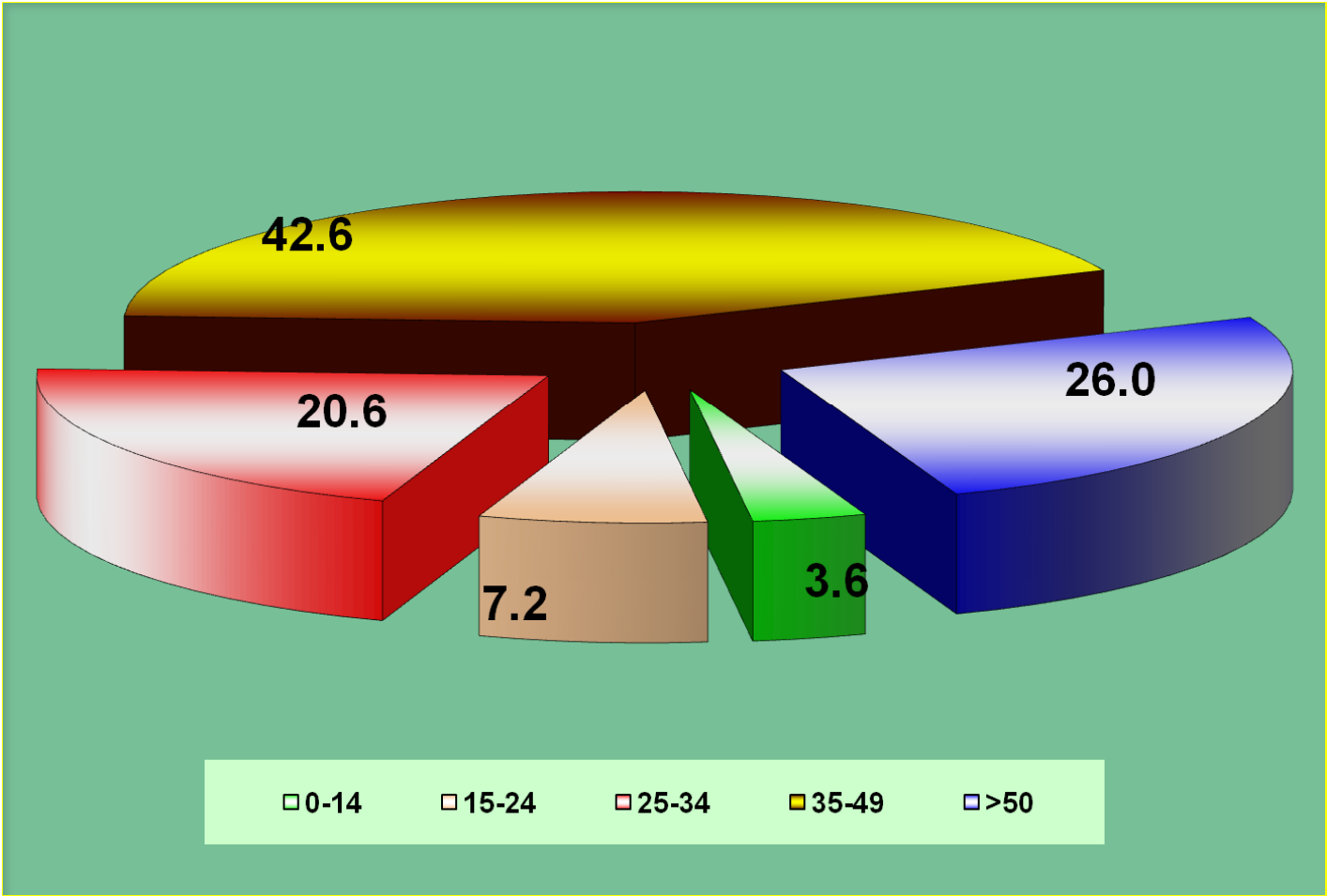
# Trend of HIV Positive cases in Goa since 1986 till 2021



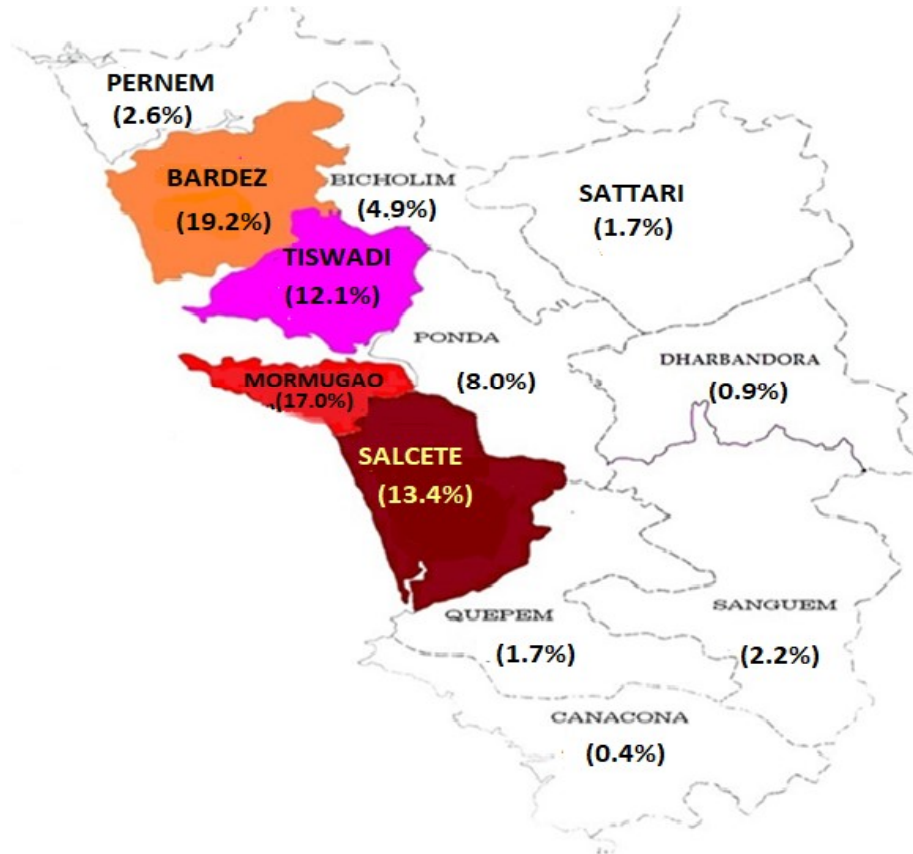
## Total number of persons tested and found positive at ICTCs, 2000 to 2021



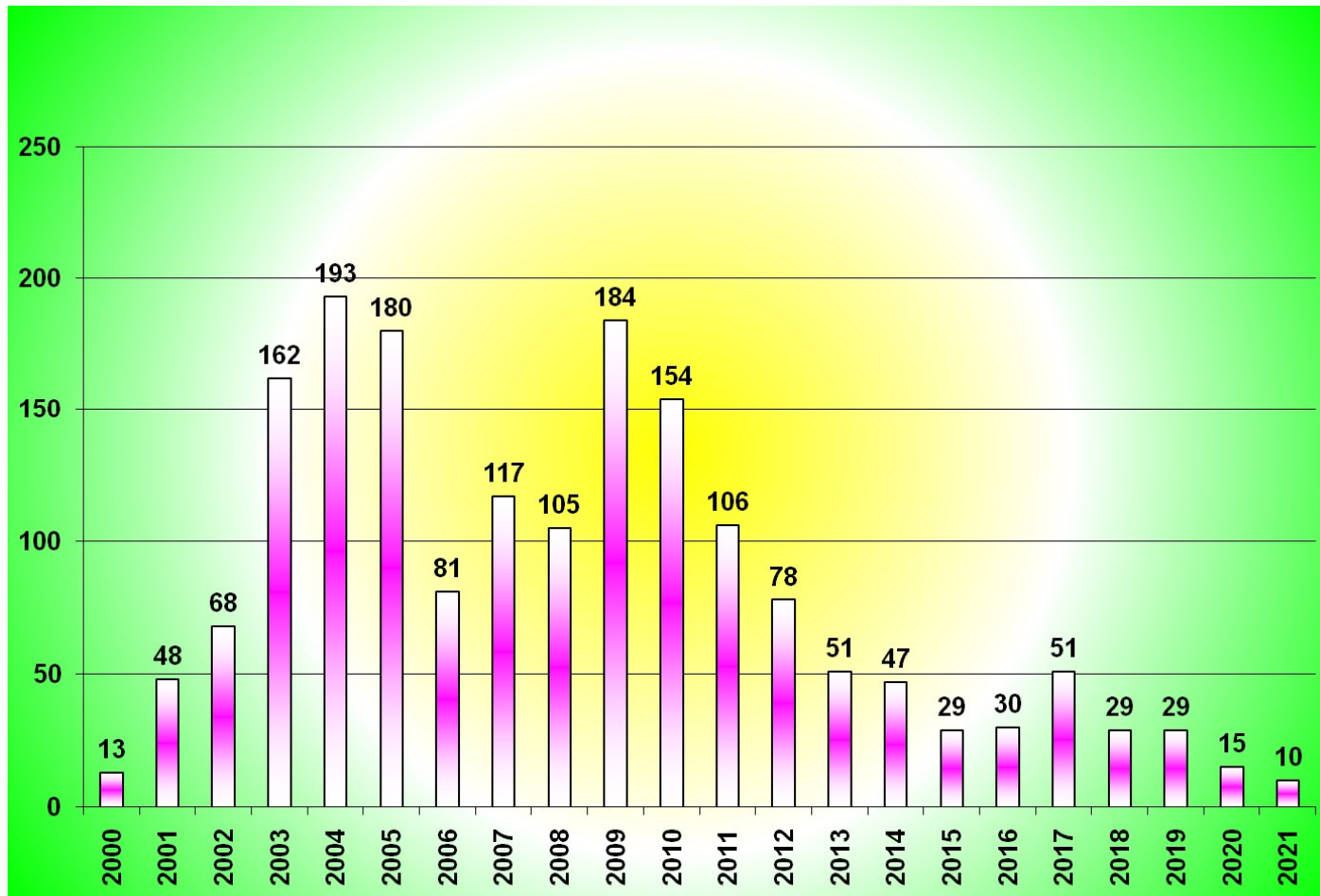
**Age wise distribution of HIV +ve cases detected in Goa, 2021**



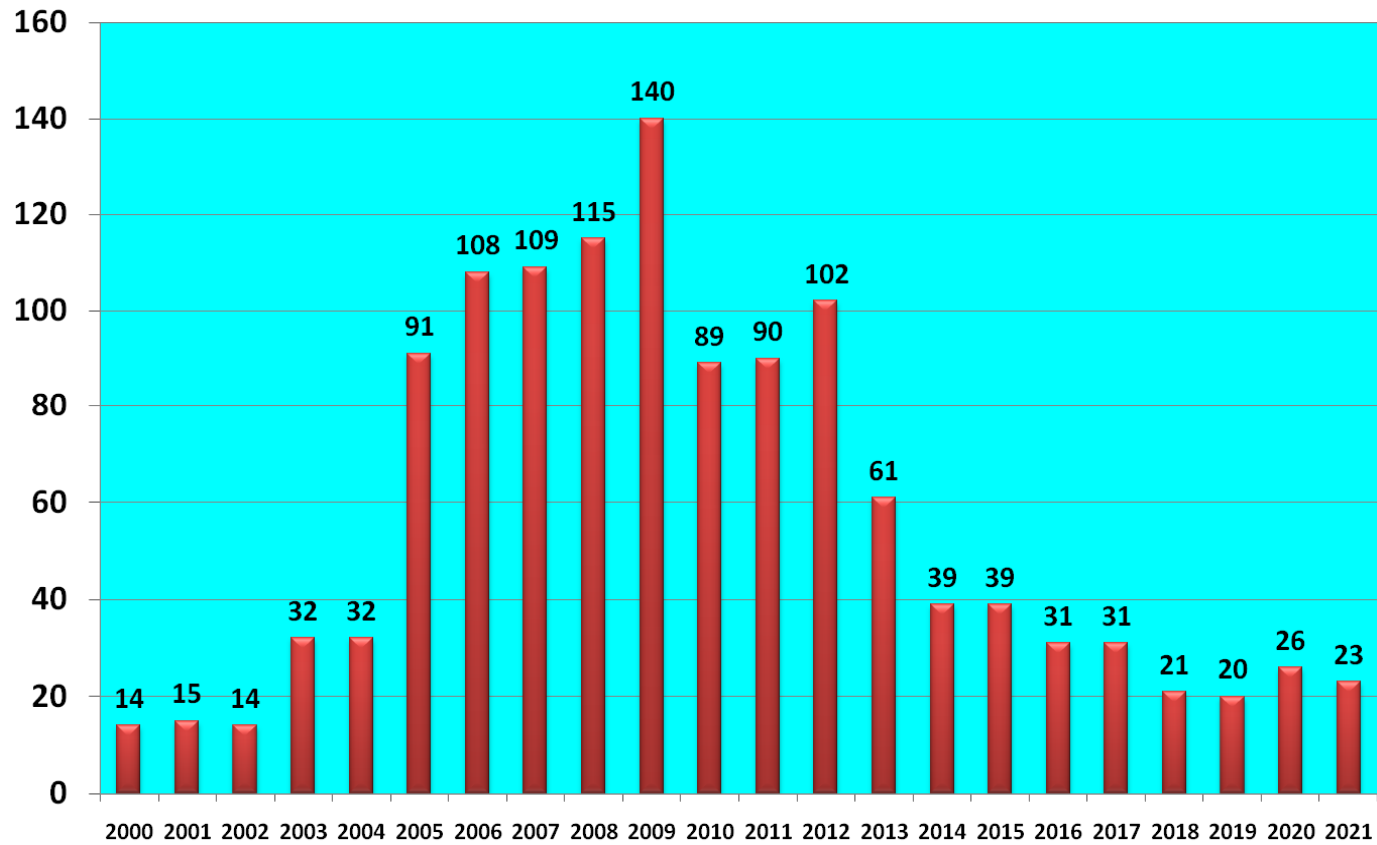
## Taluka-wise proportion (%) of HIV +ve cases detected in Goa, 2021



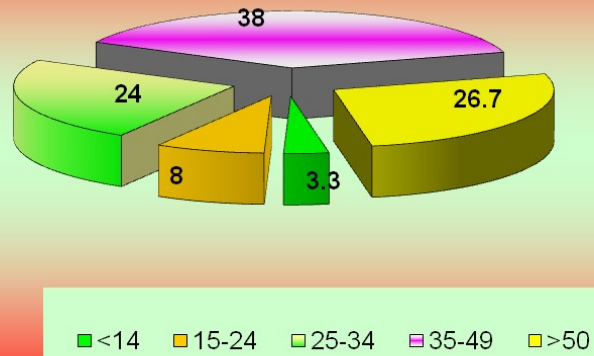
## Trend in number of AIDS cases reported in Goa, 2000 to 2021



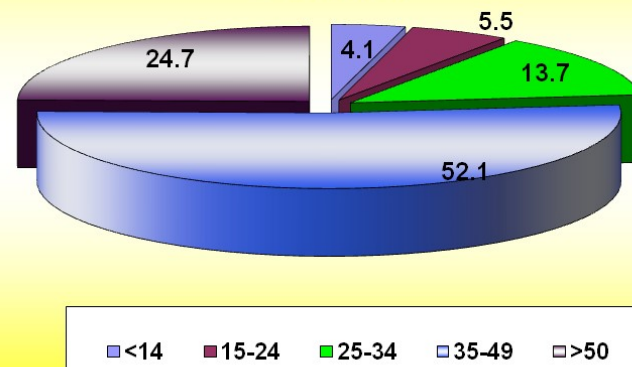
## AIDS Deaths in Goa, 2000 to 2021



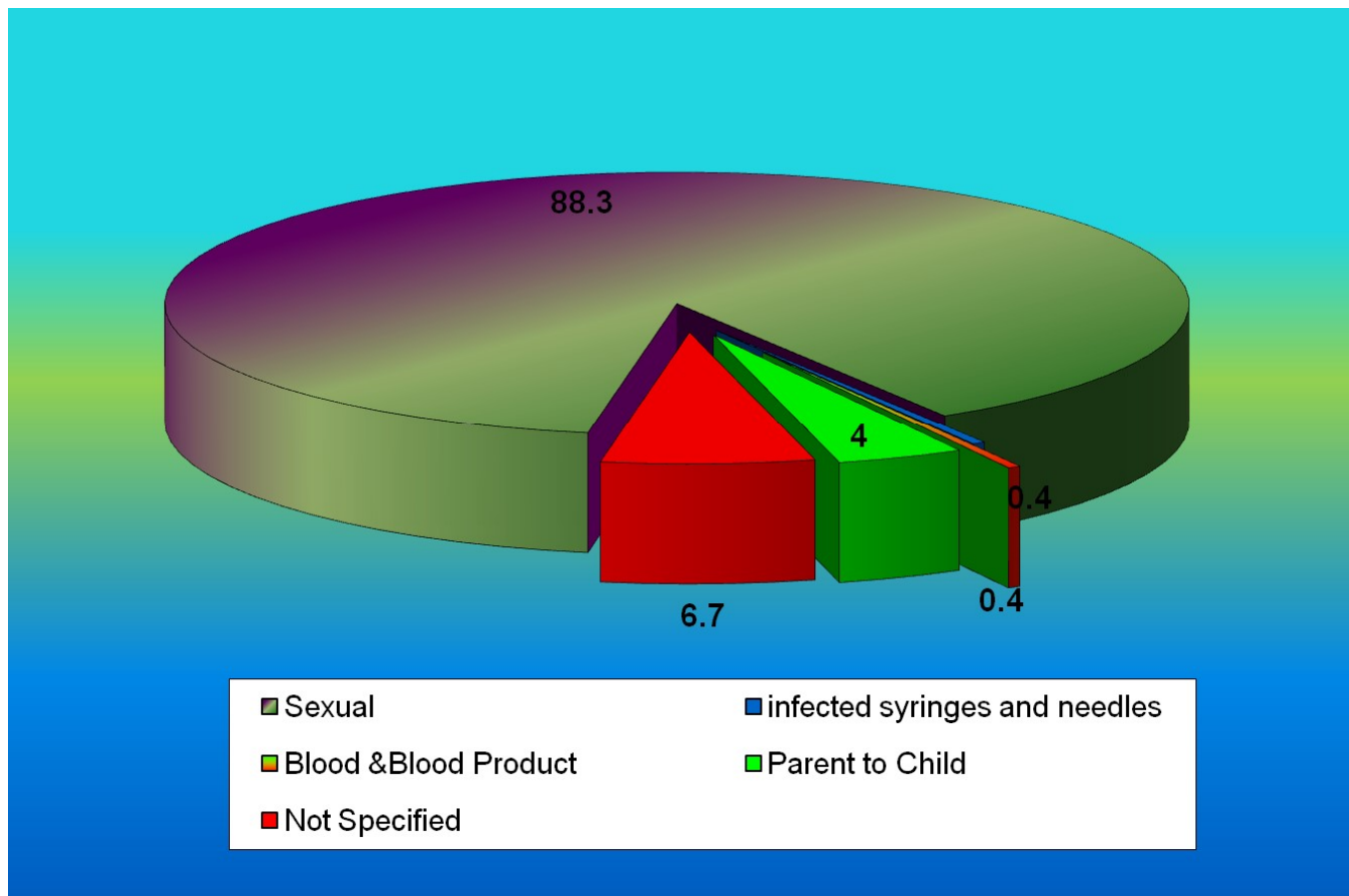
**Age /Sex wise distribution of HIV +ve males detected in Goa, 2021**



**Age/Sex wise distribution of HIV +ve females detected in Goa, 2021**



## Route of transmission of sero-positive cases detected in Goa, 2021

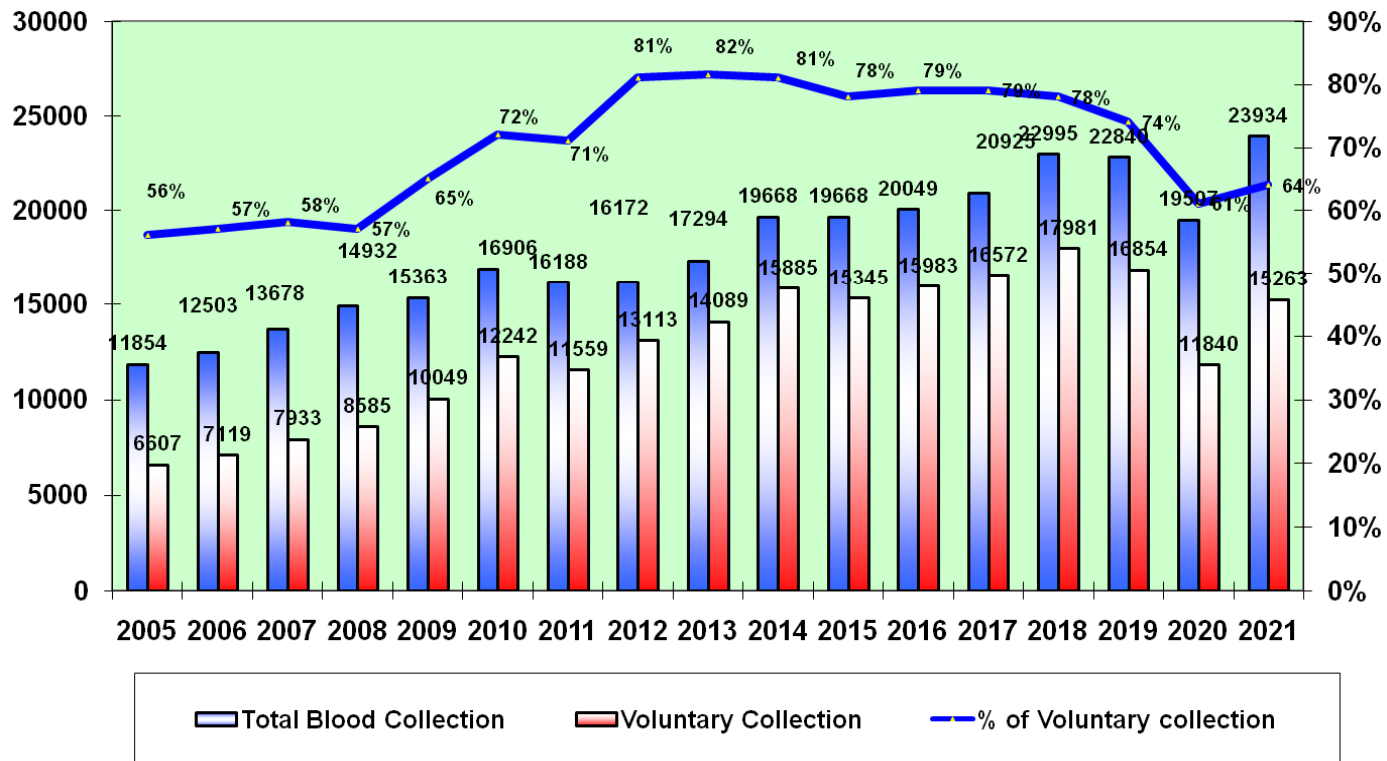




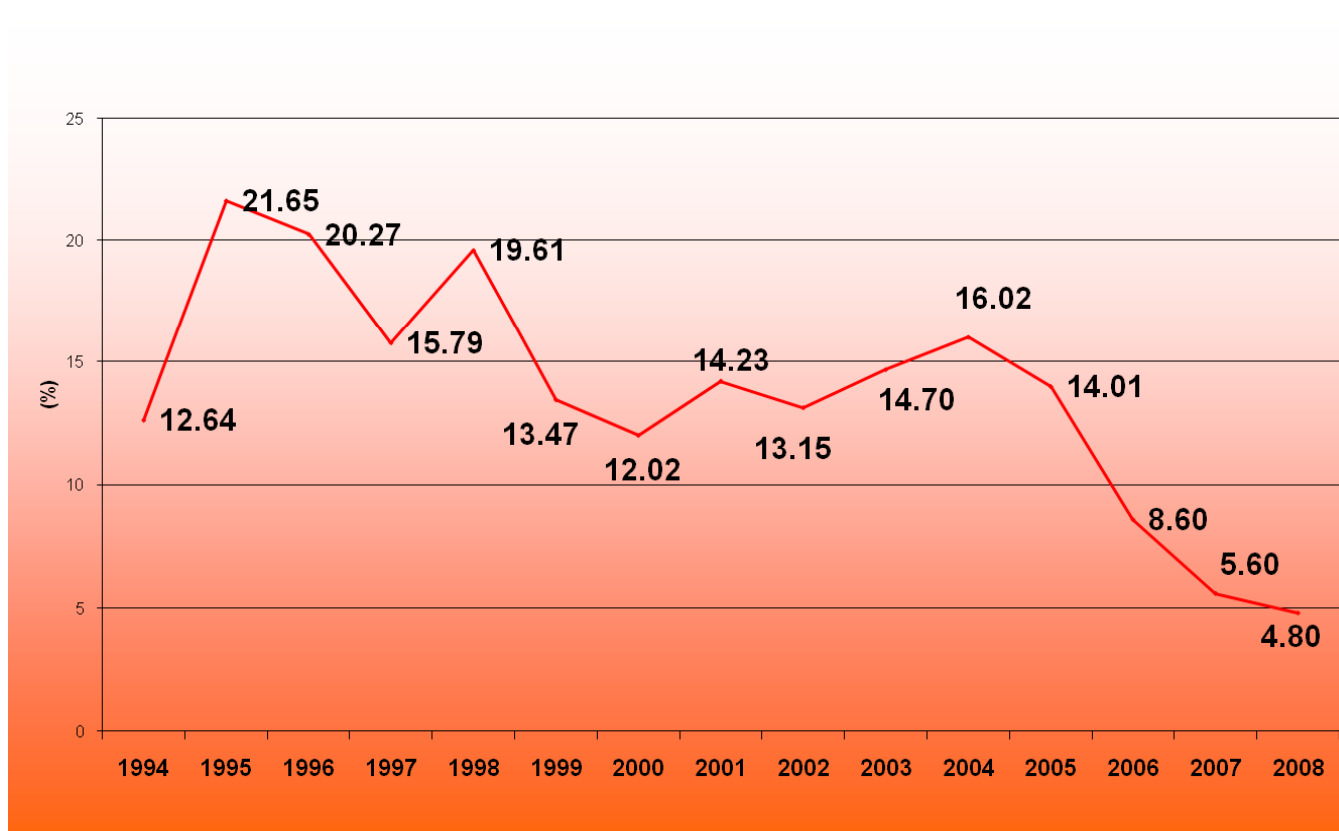
## Blood Safety in Goa, 2005-2021

Year	Total Units Collection	Voluntary Donation units	%	HIV + Donors	%
2005	11854	6607	56%	86	0.7
2006	12503	7119	57%	35	0.3
2007	13678	7933	58%	59	0.4
2008	14932	8585	57%	66	0.4
2009	15363	10049	65%	35	0.2
2010	16906	12242	72%	49	0.3
2011	16188	11559	71%	31	0.2
2012	16172	13113	81%	16	0.09
2013	17294	14089	82%	15	0.08
2014	19668	15885	81%	22	0.11
2015	19668	15345	78%	19	0.09
2016	20049	15983	79%	25	0.11
2017	20925	16572	79%	29	0.14
2018	22995	17981	78%	30	0.13
2019	22840	16854	74%	28	0.12
2020	19507	11840	60%	18	0.09
2021	23934	15263	64%	29	0.12

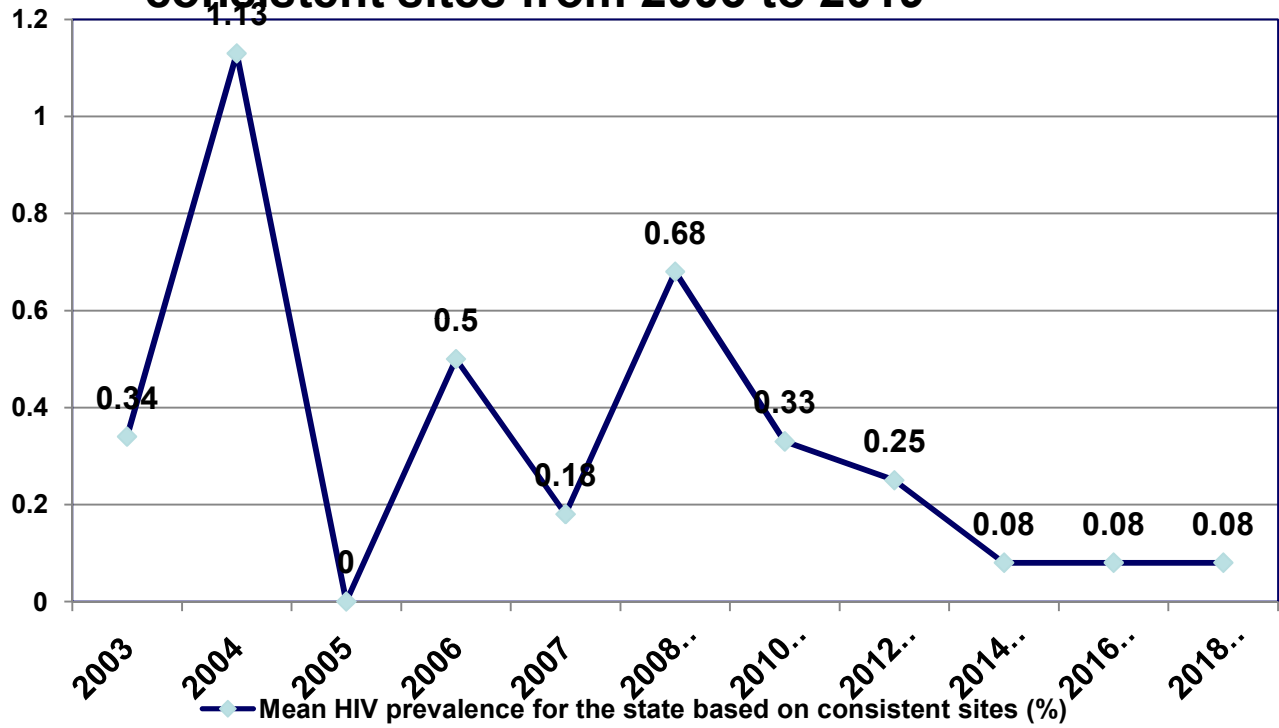
## Year- wise number of blood units collected and percentage of Voluntary Donation, 2005-2021



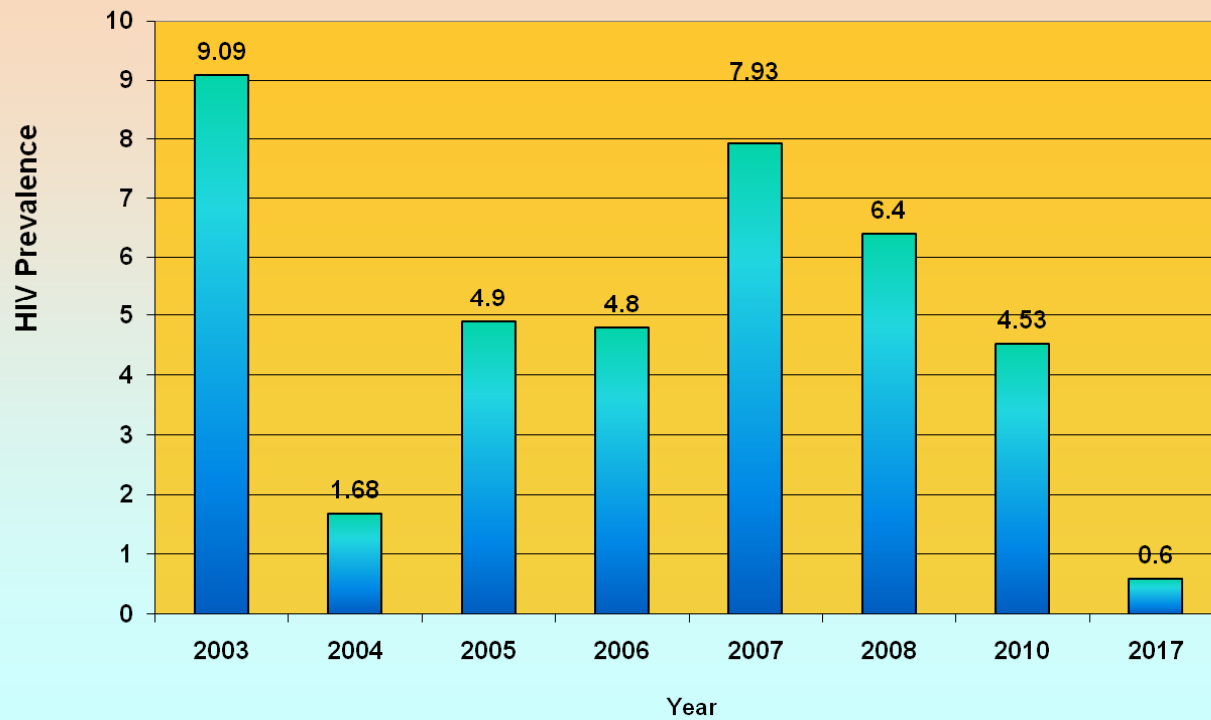
## HIV prevalence rate among STD patients as per HSS in Goa, 1994 - 2008



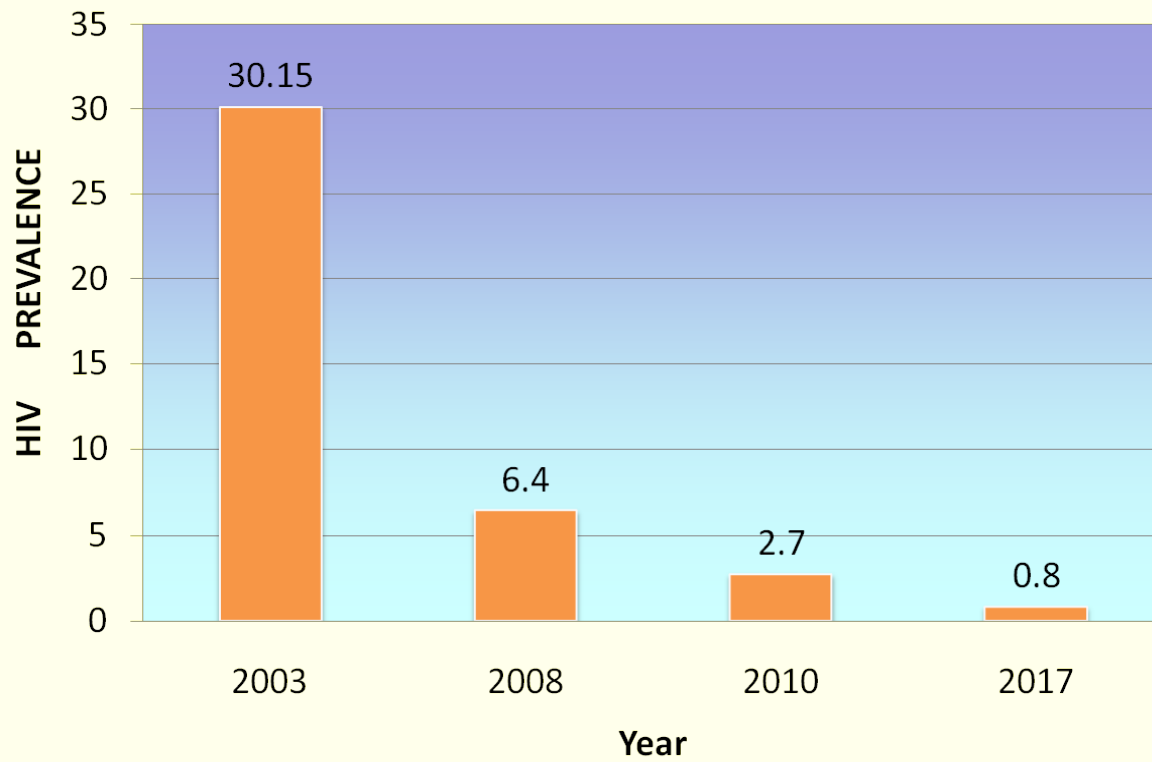
### HIV Prevalence (%) for state based on consistent sites from 2003 to 2019



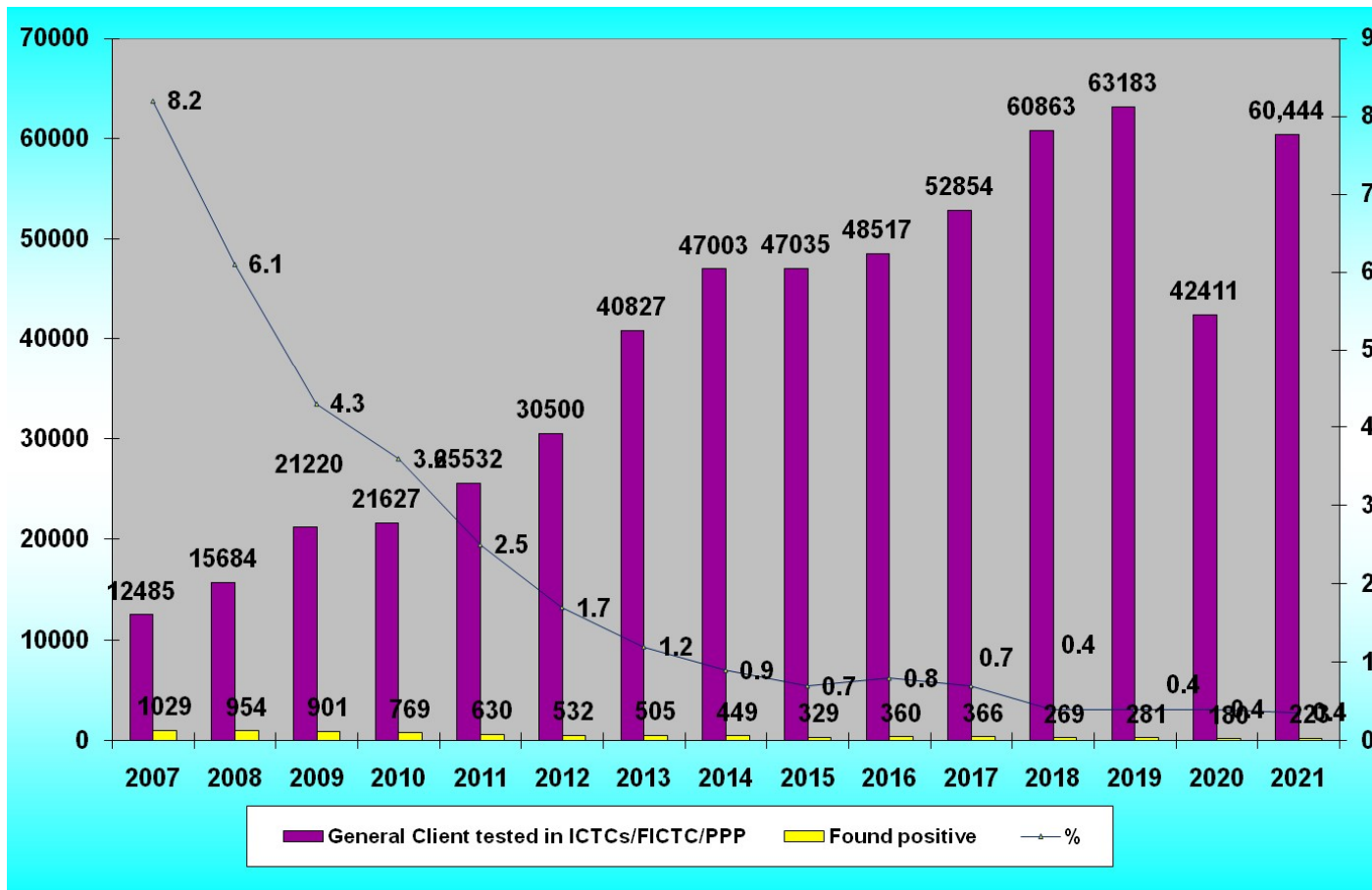
## HIV Prevalence in MSM as per HSS in Goa, 2003 to 2008, 2010 and 2017



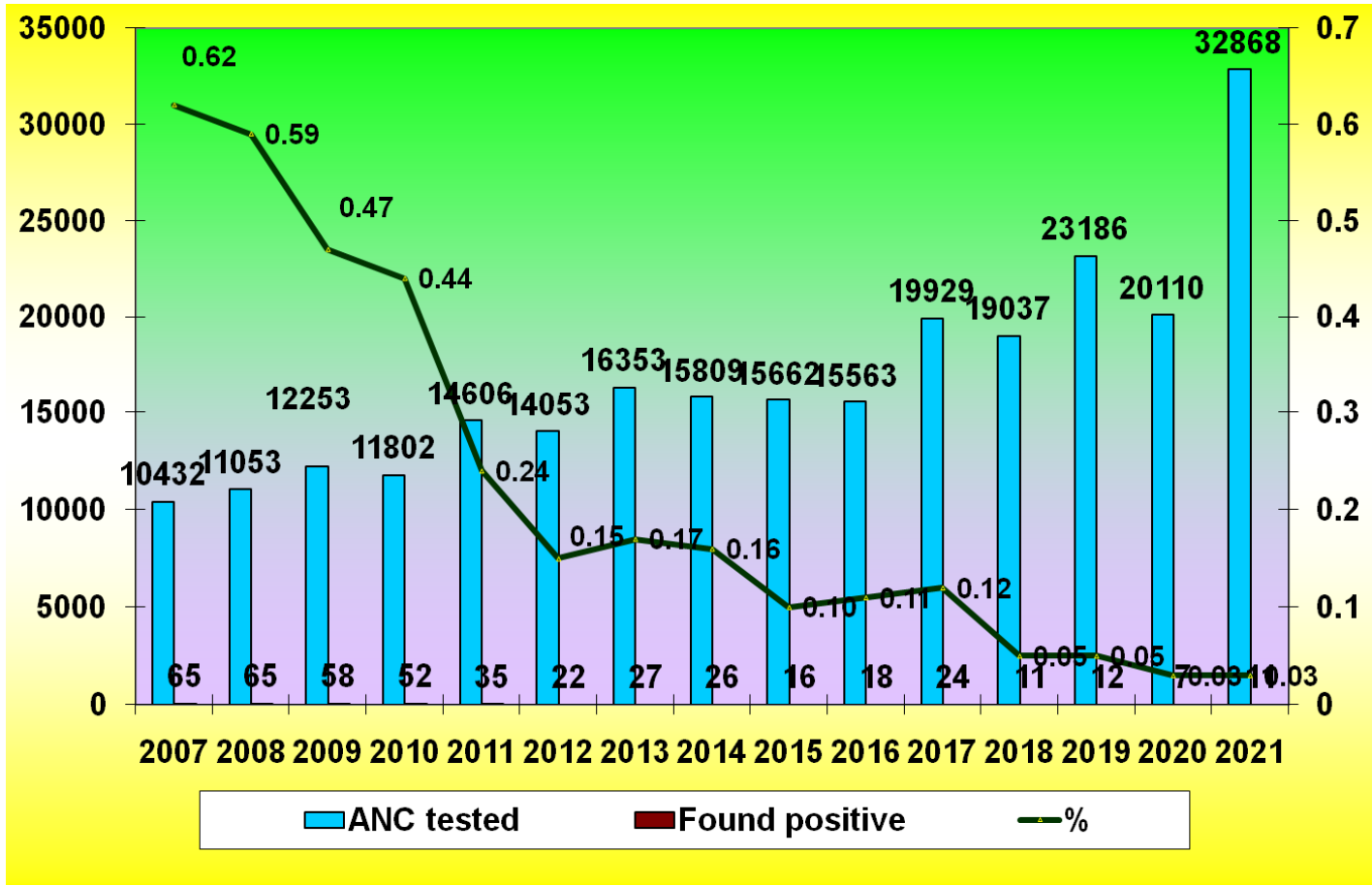
### HIV Prevalence in FSWs as per HSS in Goa, 2003, 2008, 2010 and 2017



## The number of General clients tested and found positive, 2007-2021

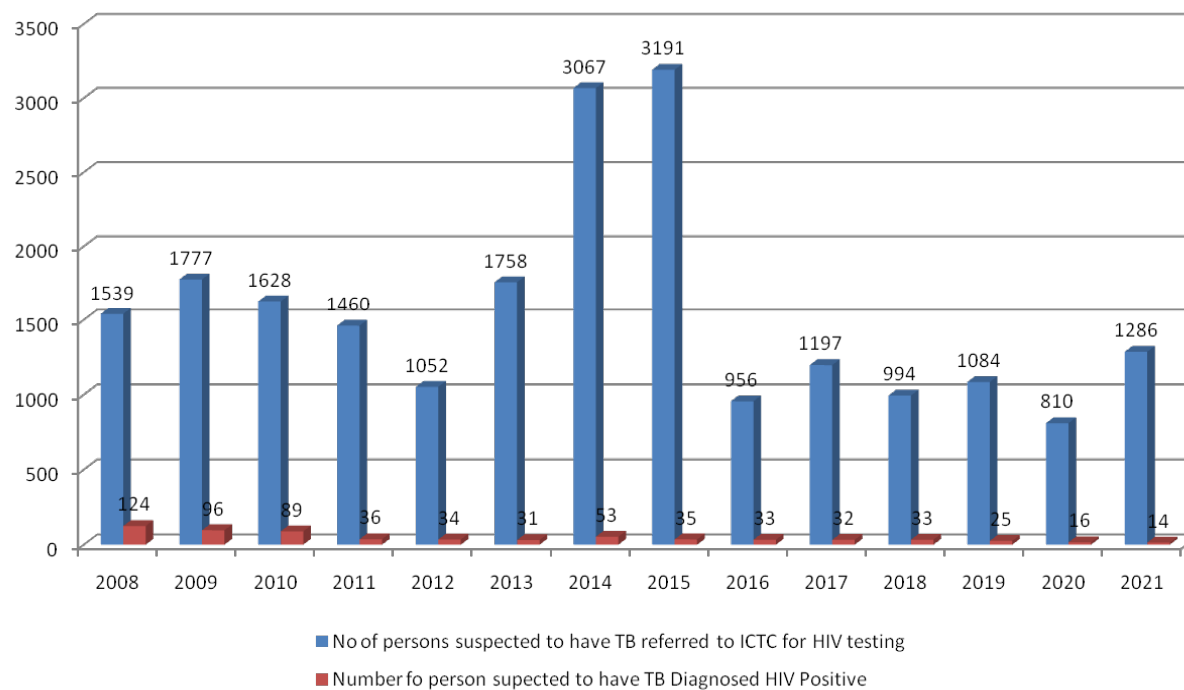


## Number of ANCs tested and found positive, 2007-2021

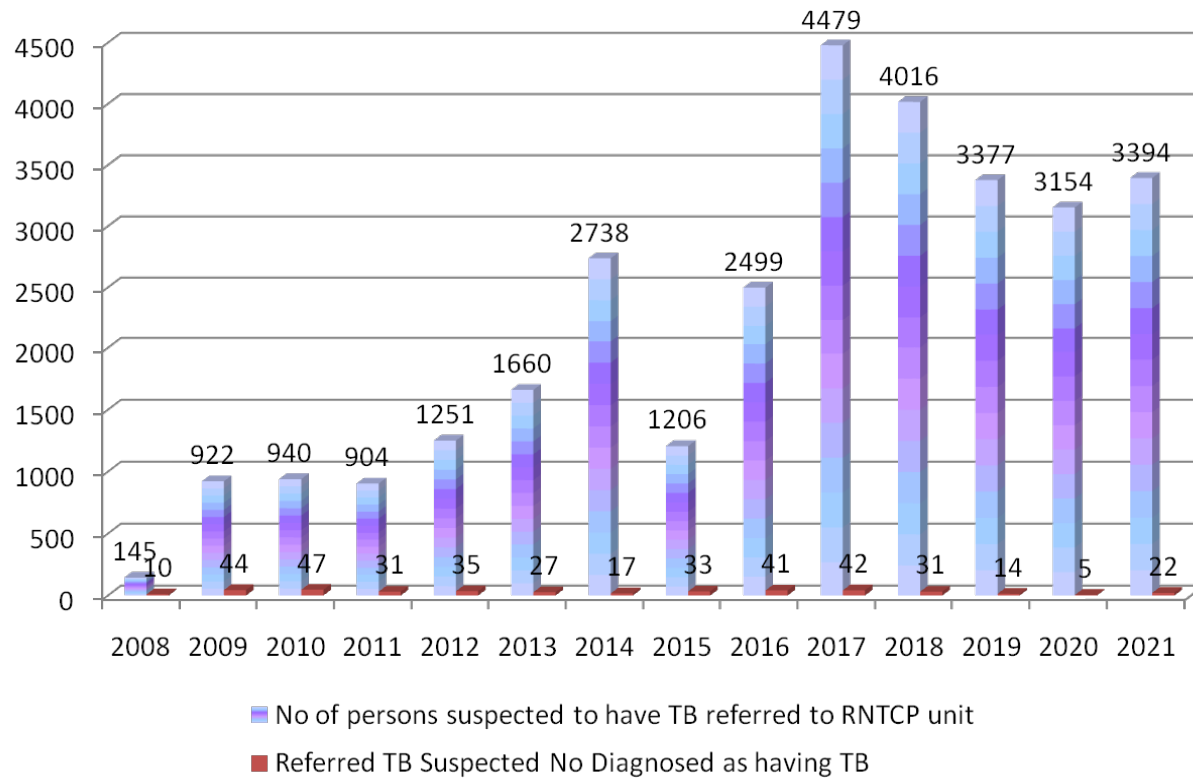




## Trends in referral from ICTC to Revised National Tuberculosis Control Programme (RNTCP) (2008-2021)

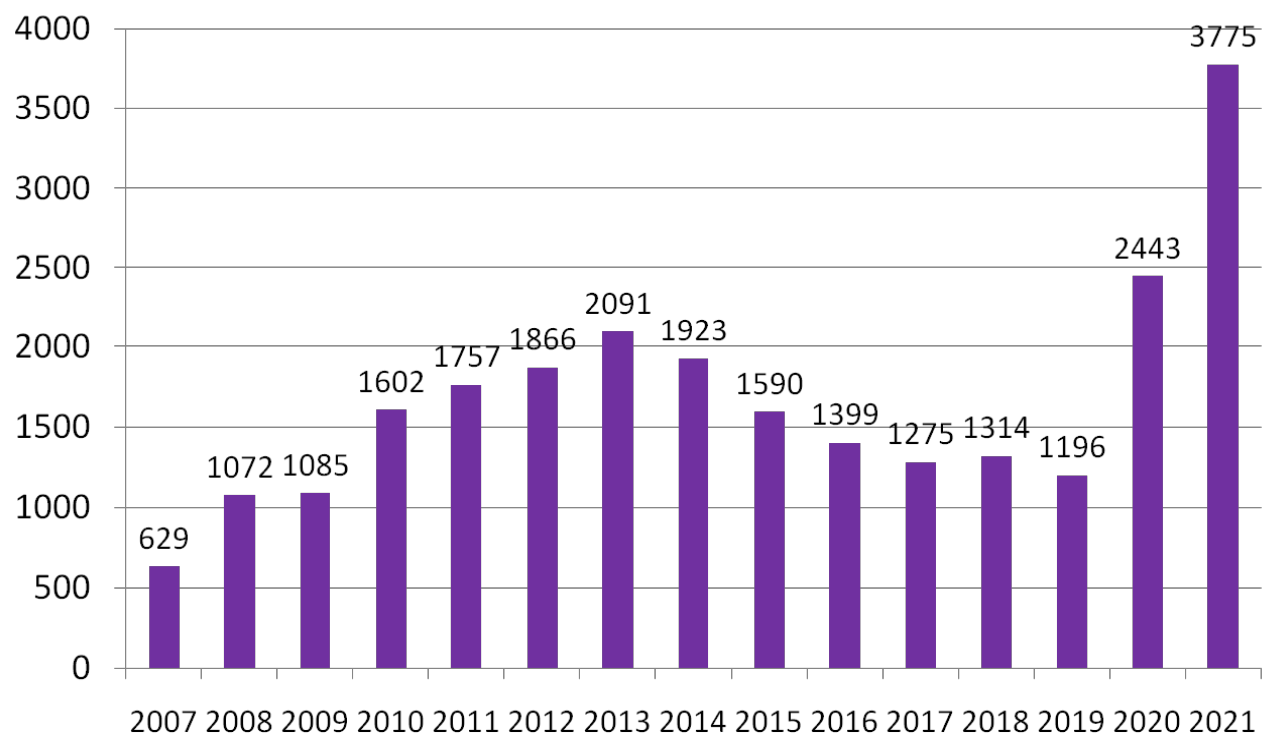


## Trends in referral of TB case detection from RNTCP to ICTC (2008-2020)

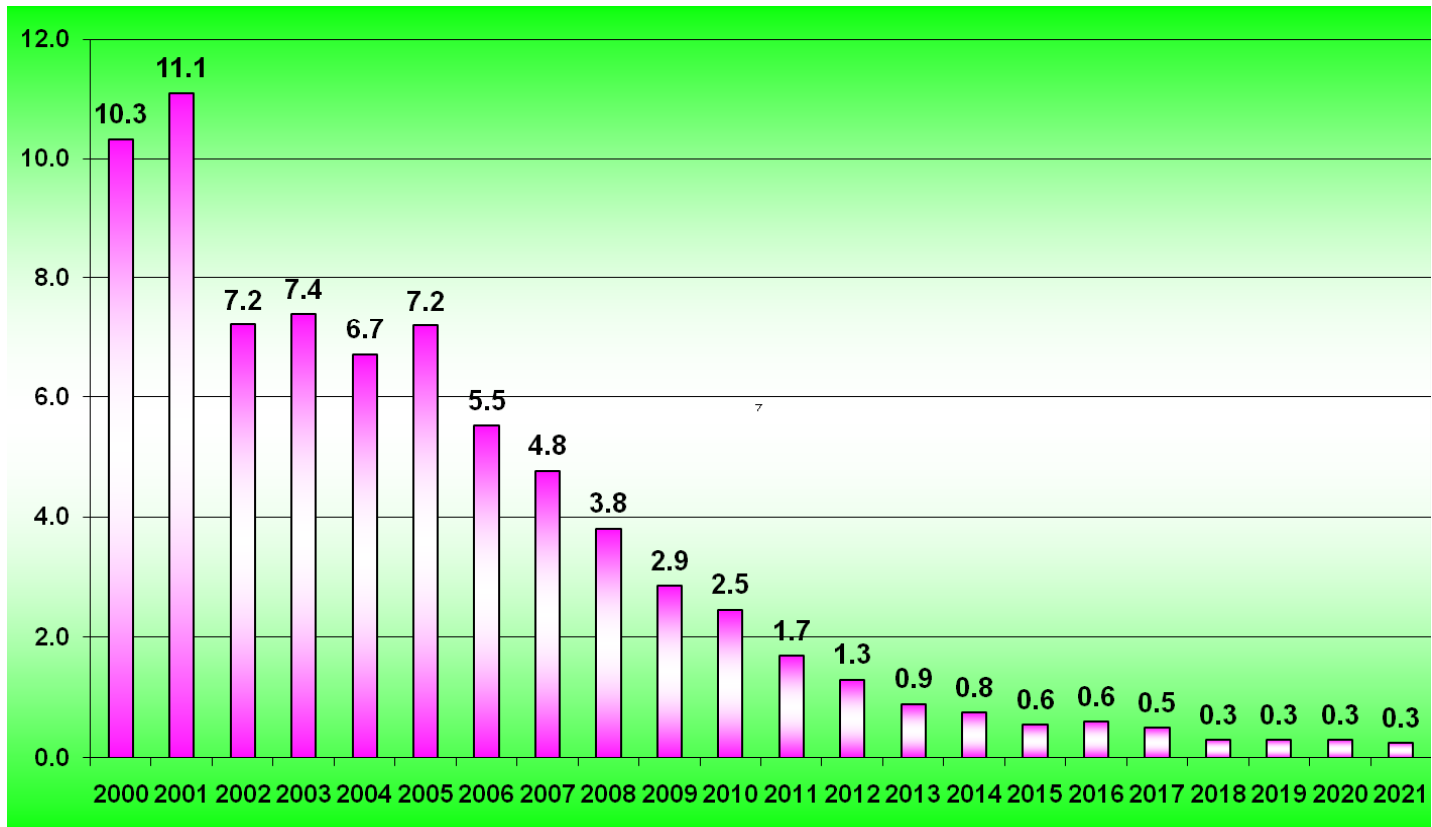


## Number of STI/RTI cases treated from 2007-2021

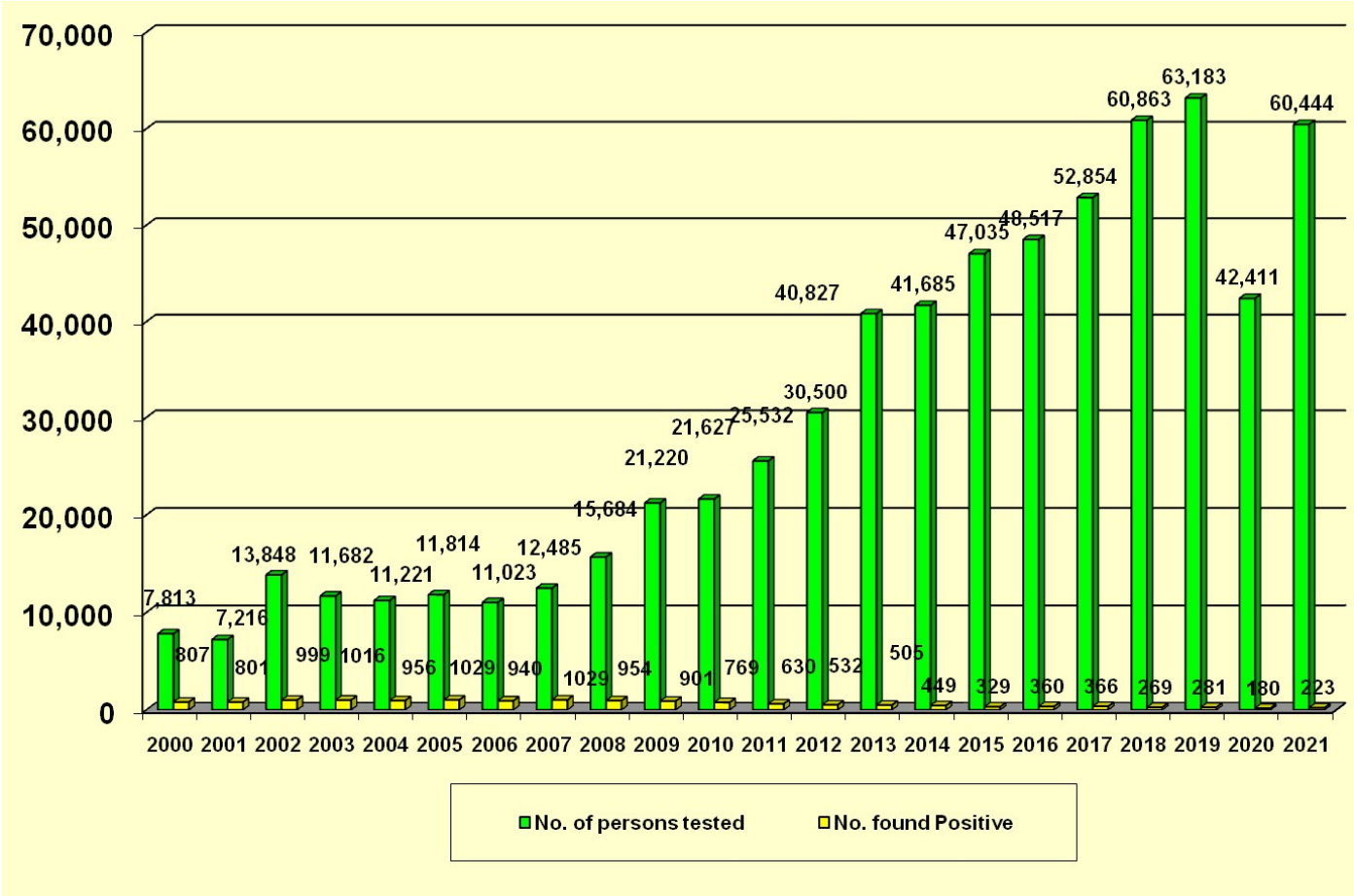
STD Cases in Goa, 2007-2021



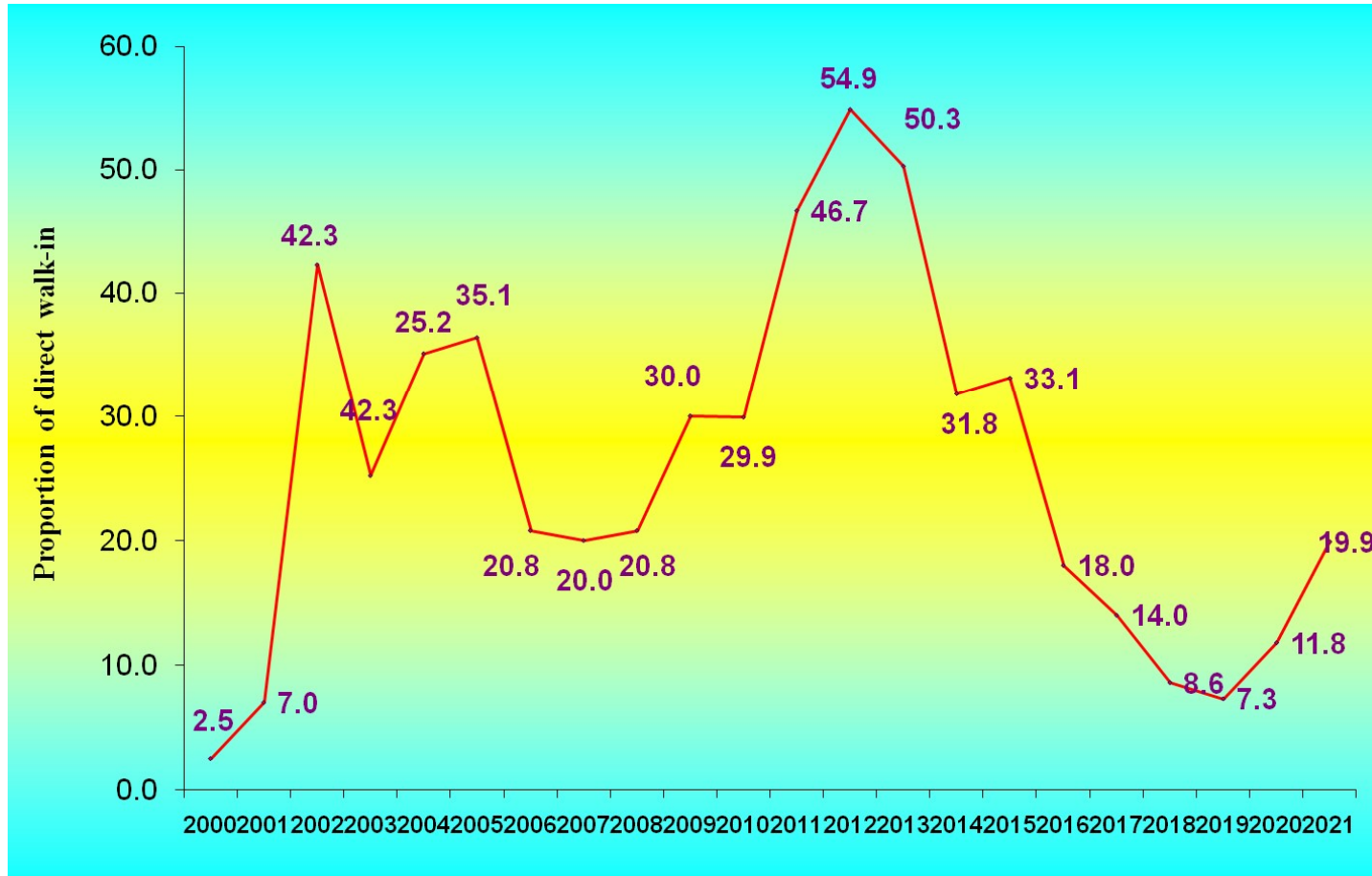
## HIV positivity rate in Goa, 2000 to 2021



## Number of General clients tested and found positive 2000 to 2021



## Proportion of direct walk-in to total persons tested, 2000-2021



## Proportion (%) of females to total HIV +ve cases detected in Goa, 2000 to 2021

